

SAINT MARY MAGDALEN CATHOLIC CHURCH



Thanks be to God

Season of Gratitude

*Demos
Gracias a Dios*



**SACRIFICIAL
GIVING** 2025

COVENANT WEEKEND
NOVEMBER 9-10

A MESSAGE FROM FR. EDWIN

“Thanks be to God
who gives us the victory
through our Lord
Jesus Christ”

- 1 Corinthians 15:57



My parish family,

This is the season of gratitude and giving here at St. Mary Magdalen. We begin this Sunday with Jesus teaching on love and discipleship. “You shall love the Lord your God with all your heart, and with all your soul, and with all your mind.... You shall love your neighbor as yourself” – Mark 12:30–31.

The great commandment is so familiar to all of you – because you live it! Every day, I am so grateful for all the many ways you show your love of God and of one another, serving and giving.

I invite you to join me this season at Mass for our message series we are calling “Thanks Be to God”. The month of November is our time to gather and take stock of all our gifts, everyone we love and everyone who loves us back, sharing all the blessings we receive from the Lord. And then we will together act on that gratitude by renewing our covenant to the Lord to keep building the Kingdom of God together as a parish. I encourage you to make this a priority in your prayer, and to talk about it with your family, as we prepare for Sacrificial Giving Covenant Sunday.

To give is an act of love – receiving God’s limitless and abundant gifts and returning them to Him is how we are called to live as Christian stewards. You know this, too, because, for the past 20 years you have walked the journey of stewardship and sacrifice together to build our beautiful church, our excellent school, our campus and outdoor prayer spaces, our small groups, our beautiful liturgies, our thriving ministries and children’s programs and our outreach in the community. Joyfully, generously, gratefully you witness the words of praise and thanksgiving that echo throughout our celebrations of Mass – “Thanks Be to God”.

God Bless You and God Bless Our Amazing Parish!

Mi familia parroquial,

Esta es la temporada de gratitud y generosidad aquí en Santa María Magdalena. Comenzamos este domingo con Jesús enseñándonos sobre el amor y el discipulado. “tú amarás al Señor, tu Dios, con todo tu corazón y con toda tu alma, con todo tu espíritu y con todas tus fuerzas.... Amarás a tu prójimo como a ti mismo” – Marcos 12:30–31. El gran mandamiento es muy familiar para todos ustedes – ¡porque lo viven! Estoy muy agradecido por las muchas maneras en que muestran su amor por Dios y por los demás, sirviendo y dando.

Los Los invito a unirse a mí en esta temporada en la Misa, para nuestra serie de mensajes que llamamos “Demos Gracias a Dios”. El mes de noviembre es nuestro tiempo para reunirnos y hacer un balance de todos nuestros dones, de todos los que amamos y de todos los que nos aman, compartiendo todas las bendiciones que recibimos del Señor.

Luego juntos actuaremos en base a esa gratitud por renovar nuestro pacto con el Señor y de seguir construyendo juntos el Reino de Dios como parroquia. Te animo a que hagas de esto una prioridad en tu oración y a que hables de ello con tu familia, mientras nos preparamos para el Domingo del Pacto de Ofrendas de Sacrificio.

El Dar es un acto de amor – recibir los dones ilimitados y abundantes de Dios y devolverse los es cómo estamos llamados a vivir como administradores cristianos. Ustedes también lo saben porque, durante los últimos 20 años, han recorrido juntos el camino de la mayordomía y el sacrificio para construir nuestra hermosa iglesia, nuestra excelente escuela, nuestro campus y espacios de oración al aire libre, nuestros grupos pequeños, nuestras hermosas liturgias, nuestras prósperos ministerios y programas para niños y nuestra asistencia en la comunidad – viviendo con alegría, generosidad y gratitud lo que resuena a lo largo de nuestras celebraciones de la Misa: “Demos Gracias a Dios”.

¡Dios los bendiga y Dios bendiga nuestra increíble parroquia!



Thanks be to God

Season of Gratitude

*Demos
Gracias a Dios*



SAINT MARY MAGDALEN PARISH

SACRIFICIAL GIVING 2025

Hearts overflowing with gratitude for all God's gifts

Why we Give?

Think back to the experiences for which you are grateful:

- For the gift of Jesus Christ freely given in the Eucharist and all the sacraments;
- The Word of God generously shared in Scripture;
- The intercession of the Saints;
- The ministry of priests and deacons, the holy women and men in religious orders, and countless lay people who use their gifts to proclaim the Gospel, to teach our children and to serve the poor and vulnerable among us.

In a challenging world, gratitude is life changing and life sustaining. It lifts our spirits and calls attention to the blessings we have received.

Grateful believers know that the work of the Church must continue so that the saving love of Jesus Christ is known in all generations.

What is Sacrificial Giving?

“ Sacrificial Giving begins with the recognition that everything we have has been given to us by God and is based on an understanding that as Christian stewards, we receive God's gifts gratefully, cultivate them responsibly, share them lovingly in justice with others, and return them with increase to the Lord. ”

– United States Bishops' Pastoral Letter on Stewardship

PLANNED

The decision to give is just that – a decision, that requires thought and prayer. Giving is integrated with other financial decisions as part of a careful, intentional response to God's generosity.

A PRIORITY

Part of our planning ensures that we give the “first fruits” – gifts given first and not after obligations have been satisfied.

SACRIFICIAL

Our gift becomes sacrificial when it comes from our substance rather than our leftover – and when we return to the Lord with increase – progressive giving. We act on our belief that our security lies not in our material resources, but in God's abundant graces.

AN EXPRESSION OF GRATITUDE

If we truly believe that God gives us all that we have, gratitude is our first response. We create a covenant to further God's kingdom – and we give through our parish because it is the body which bears witness to the values and love in action we embrace.

COVENANT WEEKEND

TAKE A STEP NOW FOR YOUR 2025 GIVING

We, as a parish, take the next few weeks to reflect upon the personal gifts we each have received as well as God's invitation to a life of stewardship. Our Sacrificial Giving 2025 theme is "Thanks Be to God", and our focus is on renewing our spiritual commitment to place God first and foremost in our lives through prayer, participation through service, and sacrifice by taking a step in giving to support His Church today and into the future.

To make our collective statement of faith, we have deemed the second and third weekends of this month "Covenant Weekends", trusting that each will respond with the fullest commitment. Your new commitment will begin in January 2025.

Our parish goal is 100 percent participation, each pledging what they can, for every gift matters. What happens on covenant weekend will set the course of all the ministries and services at St. Mary Magdalen Church, School and Early Learning Center – an investment for next year and beyond.

In the mail and at church, you will receive stewardship invitations that include a 2025 Sacrificial Giving Commitment Card. Please take the time to prayerfully read and reflect on this information so you can complete your commitment card at Mass, drop it off at the office or renew through the parish website Pledge Online portal: www.stmarymagdalen.org. It is not legally binding and may be changed any time by contacting the Parish Office.

"We give thanks to God unceasingly!"

- Thessalonians 2

ROLES OF STEWARDS OF THE CHURCH

Stewards of God's gifts are not passive beneficiaries. It is the personal responsibility of each one of us as stewards of the Church to participate in carrying out its mission:

- Parents, who nurture their children in the light of faith;
- Parishioners, who work in concrete ways to make their parishes true communities of faith and vibrant sources of service to the larger community;
- All Catholics, who give generous support—time, money, prayers, and personal service according to their circumstances—to parish and diocesan programs and to the universal Church.

YOUTH STEWARDSHIP FOR EVERY GENERATION

Every Sunday we place at the altar a basket and ask our youngsters to bring forth their stewardship envelopes. This provides them a way to share how they use their gifts from God -- good deeds, prayers, any number of ways they offer their time, talent and yes, their treasure!

Teaching to give at a young age helps start children on a path of giving that has the potential to last a lifetime. Over time, through conversations, modeling, and practicing stewardship, youth gain a better understanding of why stewardship is important and how it impacts them spiritually as well.

At our parish, member families receive both the regular sacrificial giving weekly offertory envelopes and the youth stewardship envelopes monthly by U.S. mail. Contact the parish office at 407.831.1212 or office@stmarymagdalen.org if you would like to learn more about youth stewardship.



SAINT MARY MAGDALEN PARISH

SACRIFICIAL GIVING 2025

Hearts overflowing with gratitude for all God's gifts

GIVE SAVE SPEND

SCAN TO PLEDGE



OPTION 1 PLEDGE ONLINE!

Go to: www.StMaryMagdalen.org

OPTION 2 FILL OUT PLEDGE CARD

Complete and Bring to Mass, Return to Parish Office or Drop in Mail

I intend to make a Sacrificial Gift of \$_____ weekly in the offertory to support our parish's ministries, missions and operations in 2025.

- I "took a step"
- I "took _____ steps"

(Please Print)

Name _____

Address _____

City _____ Zip _____

Email _____ Phone _____

I want more information about Automated / Online Giving options

Planned Giving

A worksheet to help you prayerfully discern and plan your sacrificial giving for the year.



1 DISCERN...

Set personal priorities and values

HOW DO I SPEND THE TIME AND RESOURCES ENTRUSTED TO ME? Name six to ten things you spent the most time doing regularly or the most money on this past year.

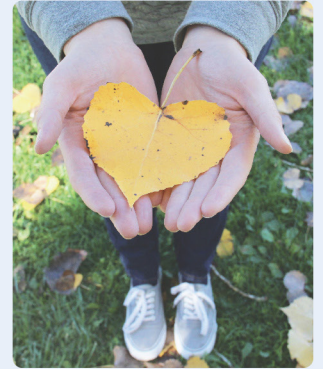
GOD AS A PRIORITY DURING THE PAST YEAR: Draw an "X" on the line to the right that you think represents how high a priority God has been in your life this past year (using time and money spent as a partial indicator).

GOD AS A PRIORITY DURING THE COMING YEAR: Draw a "O" on the line to the right that represents how high a priority you would like God to be in your life this next year.

HIGH PRIORITY



LOW PRIORITY



2 PLAN...

An intentional response to support my parish

1. WHAT PORTION OF MY INCOME WILL I GIVE?

Everything we have comes from God, so in that sense we owe everything to God. When deciding what portion to give, think about whether it is sacrificial and proportionate to what we have received from God. Prayerfully consider moving toward the biblical example of giving 10% of your income (a tithe) as an expression of your gratitude to God for the many gifts you have received. Consider taking a step towards this goal. For example, if you currently give 5% of your income to charity, take a step and give 6% this next year.

My 2025 Sacrificial Giving pledge \$ _____

2. HOW WILL I DISTRIBUTE MY GIFT?

As Catholics, we are asked to divide our total giving - one half to our parish (our primary faith community, where we celebrate Sunday Mass and other Sacraments, and where faith is nourished and lived out) and the other half to charities of our choice. By taking time to plan our giving, it will relieve some of the anxiety that may accompany requests from other charities throughout the year and help make your giving a joyful experience.



3 CONSIDER...

The "other half" to charities

THE POOR AND NEEDY IN OUR LOCAL COMMUNITY

Saint Mary Magdalen Family Services	\$ _____
The Sharing Center	\$ _____
Life Choices Medical Clinic	\$ _____
Pathways to Care	\$ _____
Hope Community Center	\$ _____

REGIONAL CHURCH (CENTRAL FLORIDA)

Vocation Funds	\$ _____
Diocese of Orlando - Our Catholic Appeal	\$ _____
Catholic Charities	\$ _____
Priest Retirement and Priest Care Collection	\$ _____

NATIONAL AND INTERNATIONAL CHURCH COLLECTIONS

The Benedictine Peace Orphanage in Mexico	\$ _____
Catholic Relief Services & Central Eastern Europe	\$ _____
Propagation of the Faith/World Mission Sunday	\$ _____
Holy Shrines/Holy Land	\$ _____
Black/Indian & Home Missions Farm Worker Ministry	\$ _____
Holy Father/Peter's Pence	\$ _____
Holy Father and Holy See throughout the world	\$ _____
Missionary Cooperative	\$ _____
Campaign for Human Development/African Church	\$ _____
Our Sister Diocese San Juan De La Maguana	\$ _____

CATHOLIC EDUCATION

St. Mary Magdalen School & Early Learning Center	\$ _____
Educational Assistance Program	\$ _____
Bishop Moore High School	\$ _____
Morning Star School	\$ _____

MY PERSONAL CHARITIES

_____	\$ _____
_____	\$ _____

TOTAL "OTHER HALF" GIVING \$ _____